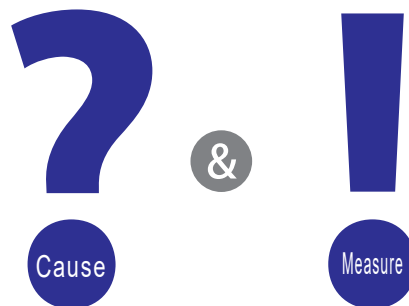




**The  
SOLUTIONS**

**[Rigid Vertical  
Limit Switch]**

Must-read Details of switch failure  
and preventive measures



**Let's Prolong Switch Life by Preventing Failures!**

## Introduction

We would like to thank you for using our switches.

We started to develop switches over half a century ago. In order to do everything possible to meet the needs of our customers, we have been committed to various types of switch development and quality improvement. We are pleased to inform you that our switches have been used for equipment/devices in various applications, and we shipped **about a billion switches in one year (actual figure in FY2022 by our research)**. We appreciate selecting and continuing to use our products.

We summarized preventive measures against failures in this guide so that customers will use our switches more safely.

We appreciate if The Solution would be helpful in preventive/corrective actions when malfunction occurs.

We are going to meet our customers' needs by focusing on core technologies, and appreciate your continued business.

**OMRON Corporation**

## Notes

- “The Solution” introduces some typical examples of failures found by our customers. Please understand some cases may not apply to “The Solution.”
- [Please do not unseal, disassemble, etc. samples of switches sent out for detailed analysis as doing so may adversely affect analysis.](#)  
Please note that if you disassemble a switch (ex, open the cover), we may not be able to investigate the true cause.

## Table of Contents

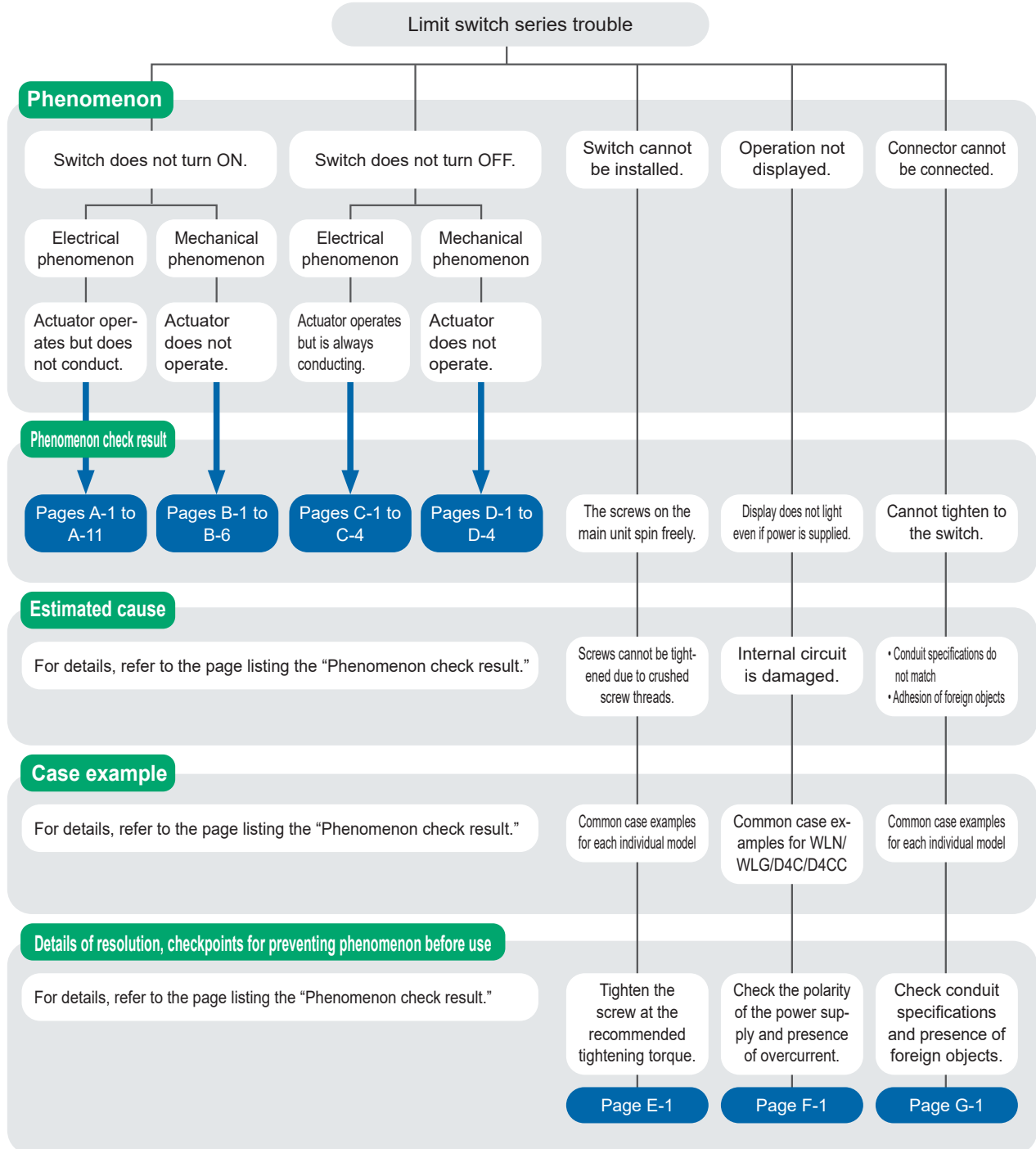
No.	Phenomenon	Phenomenon check result	Estimated cause	Details of resolution, checkpoints for preventing phenomenon before use	Case example format and page of description
1	Actuator operates but does not conduct.	Contact resistance is high.	During normally open (NO) use, it does not conduct if the operating stroke is insufficient.	Is the actuator ON/OFF operation set near the contact switching position?	Common case examples for each individual model Page: A-1
2			A general load specification switch is used in the micro load range, and insulating material accumulates due to repeated operation.	Are the load conditions used compatible with the specifications of the switch?	Common case examples for each individual model Page: A-2
3			Carbides have formed on the contact surface due to the influence of the switching load and have turned into insulation material.	Is the circuit configured to allow a current exceeding the rating to flow to the switch?	Common case examples for each individual model Page: A-3
4		Contact resistance is infinite.	Contacts melt due to over-current.	Is the circuit configured to allow a current exceeding the rating to flow to the switch?	Common case examples for each individual model Pages: A-4, A-5
5			There is a silicon gas generating source in the area around the switch and silicon is formed on the contacts.	Remove any silicone materials around switches or mold release agents, etc. in molded products.	Common case examples for each individual model Pages: A-6, A-7
6			The inside of the switch is disassembling.	Do not set an excessive stroke and prevent the switch from being subjected to excessive shock.	Common case examples for each individual model Page: A-8
7			Foreign objects or liquids get inside the switch and adhere to the contacts.	When using at places, for example, where the switch is constantly subjected to foreign objects and liquid, evaluate the switch under actual operating conditions beforehand and use the switch under adequate conditions.	Common case examples for each individual model Page: A-9
8			There is an ammonium dihydrogen phosphate-based gas generating source in the area around the switch and the ammonium dihydrogen phosphate-based gas is formed on the contacts.	If there is a material containing a phosphorus (ammonium dihydrogen phosphate) component in the area around where the switch is used, remove it from around the switch or change it to another material.	Common case examples for each individual model Pages: A-10, A-11
9	Actuator does not operate.	Both the operating distance and operating force cannot be measured.	Dust and other foreign objects stick to the switch and obstruct operation.	As general-purpose basic switches are not sealed type switches, the entry of foreign objects, liquids, etc. cannot be completely prevented. When a foreign object is present, consider the use of a sealed type switch.	Common case examples for each individual model Page: B-1
10		Operating force is variable (snagging).	Setting an excessive stroke causes the shaft to deform and not operate.	If the lever is pushed in beyond the position where it does not move, the shaft that interlocks with the lever is deformed and may cause faulty operation.	Common case examples for each individual model Page: B-2
11		Cannot push the distance up to where the switch turns ON.	The side set by one-side operation of the lever does not operate.	When changing the operating direction, the actuator does not operate if the installation direction of the plunger is different. Check the installation direction of the plunger.	Common case examples for the WL series Page: B-3
12			Deformation caused by excessive external force being applied to the switch actuator.	Is a load being applied on the actuator other than in the operating direction? Handle the switch so that unbalanced force and a load other than in the operating direction are not applied to the actuator.	Common case examples for each individual model Pages: B-4, B-5
13			Significant abrasion of the switch actuator is occurring which causes sliding resistance.	Is the operation frequency exceeding the specified value? An extremely high operation frequency will result in shock action, which may cause wear powder.	Common case examples for each individual model Page: B-6

## Table of Contents

No.	Phenomenon	Phenomenon check result	Estimated cause	Details of resolution, checkpoints for preventing phenomenon before use	Case example format and page of description
14	Actuator operates but is always conducting.	NO contact is in a conducting state.	The actuator is pushed in.	Set the stroke so that the operating body is completely away from the actuator and the switch returns to the FP (free position).	Common case examples for each individual model Page: C-1
15			Contact is welded.	Is the circuit configured to allow a current exceeding the rating to flow to the switch? Take care to prevent an overcurrent from flowing to the switch. (Including short-circuit current)	Common case examples for each individual model Pages: C-2, C-3
16			Liquid enters inside the switch.	Is the area around the switch being sprayed with liquid? Switches are generally not constructed with resistance against water. Use a protective cover to prevent direct spraying if the switch is used in locations subject to splashing or spurting oil or water, dust adhering.	Common case examples for each individual model Page: C-4
17	Actuator does not operate.	Both the operating distance and operating force cannot be measured.	Dust and other foreign objects stick to the switch and obstruct operation.	As general-purpose basic switches are not sealed type switches, the entry of foreign objects, liquids, etc. cannot be completely prevented.	Common case examples for each individual model Page: D-1
18			Deformation caused by excessive external force being applied to the switch actuator.	Is the operation of the head roller accompanied by shock?	Common case examples for each individual model Pages: D-2, D-3
19			Significant abrasion of the switch actuator is occurring which causes sliding resistance.	Is the operation frequency exceeding the specified value? An extremely high operation frequency will result in shock action, which may cause wear powder.	Common case examples for each individual model Page: D-4
20	Switch cannot be installed.	The screws on the main unit spin freely.	Screws cannot be tightened due to crushed screw threads.	Tighten the screw at the recommended tightening torque.	Common case examples for each individual model Page: E-1
21	Operation not displayed.	Display does not light even if power is supplied.	Internal circuit is damaged.	Check the polarity of the power supply and presence of overcurrent.	Common case examples for WLN/WLG/D4C/D4CC Page: F-1
22	Connector cannot be connected.	Cannot tighten to the switch.	<ul style="list-style-type: none"> <li>• Conduit specifications do not match</li> <li>• Adhesion of foreign objects</li> </ul>	Check conduit specifications and presence of foreign objects.	Common case examples for each individual model Page: G-1

# List of Market Trouble FTA Related to Rigid Vertical Limit Switches

We are developing FTA by trouble phenomenon of limit switch series. The following lists the estimated causes by each individual result confirmed by the customer. Refer to each case example, and use it to solve and prevent trouble.



## List of OMRON rigid vertical Limit Switch series models

WLN/WLG



D4C/D4CC



HL



D4A



# [Phenomenon: Actuator operates but does not conduct]

## ■ Phenomenon check result and cause



<Phenomenon check result>

- Contact resistance is high.

<Cause>

During normally open (NO) use, it does not conduct if the operating stroke is insufficient, or conduction becomes unstable.

## ■ Details of resolution, checkpoints for preventing phenomenon before use



### (1) Is the actuator ON/OFF operation set near the contact switching position?

The range near the contact switching position (OP: operating position, RP: return position) is an unstable contact range where conductivity trouble may occur.

In this case, resistance to vibration and shock weakens.

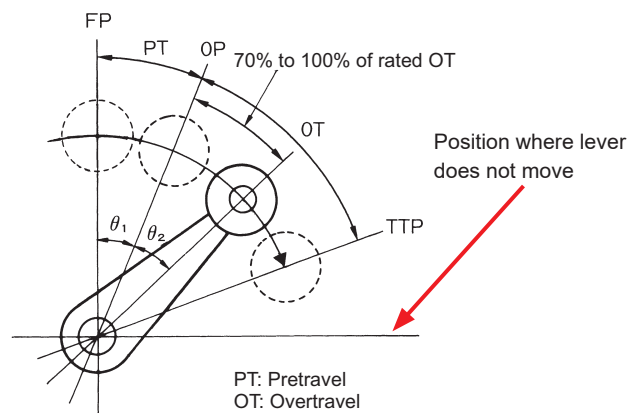
During normally open (NO) use, ensure an operating stroke of 70% to 100% of the rated OT.

Set the operating angle to within the maximum value of  $PT + OT = TTP$  (see lever operation diagram) including movement by inertia.

[Lever specification]



[Lever operation diagram]



### (2) Are the switch mounting screws loose or is the operating body deformed?

If the switch mounting screws are loose or there is deformation or distortion on the operating body side, there is the possibility that normal operation cannot be performed even if a correct stroke is set.

Also, even though there may not be a problem at the early stages, the above trouble may occur over the course of time. So, pay attention when installing the switch and also perform periodic inspections.

# [Phenomenon: Actuator operates but does not conduct]

## ■ Phenomenon check result and cause



<Phenomenon check result>

- Contact resistance is high.

<Cause>

A general load specification switch is used in the micro load range, and insulating material accumulates due to repeated operation.

## ■ Details of resolution, checkpoints for preventing phenomenon before use



### Are the load conditions used compatible with the specifications of the switch?

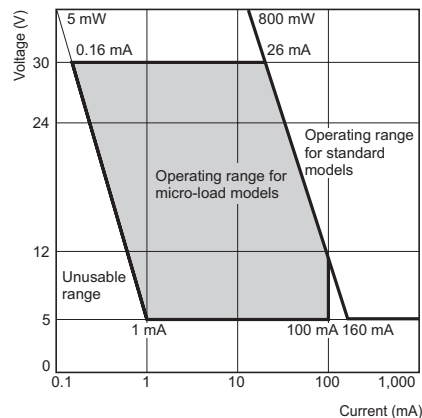
Using a model for ordinary loads to open or close the contact of a micro load circuit may result in faulty contact.

Use switches in the ranges shown in the diagram below.

However, even when using micro load models within the operating range shown here, if an inrush current occurs when the contact is opened or closed, it may increase contact wear and so decrease durability. Therefore, insert a contact protection circuit where necessary.

The minimum applicable load is the N-level reference value. This value indicates the malfunction reference level for the reliability level of 60% ( $\lambda_{60}$ ). (JIS C5003)

\*  $\lambda_{60} = 0.5 \times 10^{-6}$ /operation indicates that the estimated malfunction rate is less than 1/2,000,000 operations with a reliability level of 60%.



# [Phenomenon: Actuator operates but does not conduct]

## ■ Phenomenon check result and cause



<Phenomenon check result>

- Contact resistance is high.

<Cause>

Carbides have formed on the contact surface due to the influence of the switching load and have turned into insulation material.

## ■ The malfunction case

### ● Carbides have formed.

Example) WLCA12-2N-N

Inside of built-in switch	12 moving contacts	11 moving contacts
	12 fixed contacts	11 fixed contacts

### ● Carbides have formed.

Example) WLG12

Carbides have formed and the contact does not turn ON.

3 moving contacts	4 moving contacts



# [Phenomenon: Actuator operates but does not conduct]

## ■ Phenomenon check result and cause



<Phenomenon check result>

- Contact resistance is infinite.

<Cause>

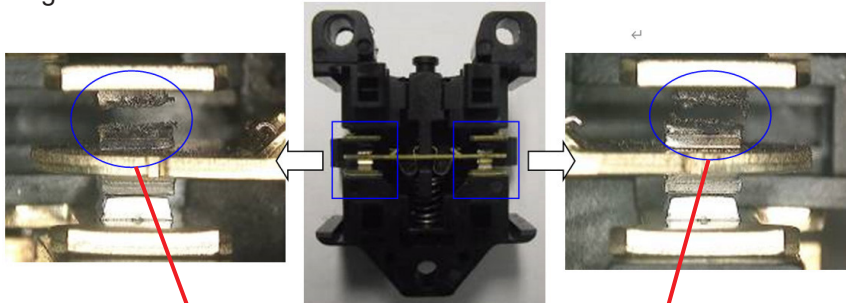
Contacts melt due to overcurrent.

## ■ The malfunction case

### ● Contact is welded.

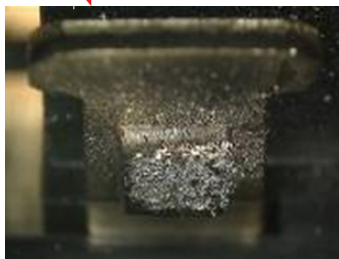
Example) WLCA2-8-N

Image of a built-in switch



The contact is welded and detached protrusions are visible.

NO side fixed contact



NO side moving contact



# [Phenomenon: Actuator operates but does not conduct]

■ Details of resolution, checkpoints for preventing phenomenon before use



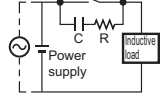
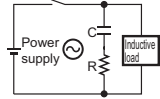
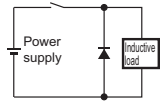
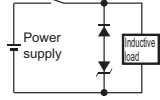
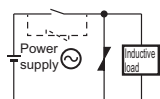
Is the circuit configured to allow a current exceeding the rating to flow to the switch?

Take care to prevent an overcurrent from flowing to the switch. (Including short-circuit current)

Also, depending on the type of load, there is a large difference between the inrush current and the steady-stage current or the steady-state current and the reverse voltage, and there is a possibility that a current at the rating or above will flow. So, also check these.

\* Refer to the case example of a general contact protection circuit provided for reference.

## Case example of a general contact protection circuit

Circuit example	Applicable current		Feature	Element selection	
	AC	DC			
CR circuit		See note.	Yes	<b>Note:</b> When AC is switched, the load impedance must be lower than the C and R impedance.	C: 0.5 to 1 $\mu$ F per switching current (1 A) R: 0.5 to 1 $\Omega$ per switching voltage (1 V) The values may change according to the characteristics of the load. The capacitor suppresses the spark discharge of current when the contacts are open. The resistor limits the inrush current when the contacts are closed again. Consider these roles of the capacitor and resistor and determine the ideal capacitance and resistance values from experimentation.
		Yes	Yes	The operating time will increase if the load is a relay or solenoid. It is effective to connect the CR circuit in parallel to the load when the power supply voltage is 24 or 48 V and in parallel to the contacts when the power supply voltage is 100 to 200 V.	Use a capacitor with a dielectric strength between 200 and 300 V. When AC is switched, make sure that the capacitor has no polarity. If, however, the ability to control arcs between contacts is a problem for high DC voltage, it may be more effective to connect a capacitor and resistor between the contacts across the load. Check the results by testing in the actual application.
Diode method		No	Yes	Energy stored in the coil is changed into current by the diode connected in parallel to the load. Then the current flowing to the coil is consumed and Joule heat is generated by the resistance of the inductive load. The reset time delay in this method is longer than that of the CR method.	The diode must withstand a peak inverse voltage 10 times higher than the circuit voltage and a forward current as high as or higher than the load current.
Diode and Zener diode method		No	Yes	This method will be effective if the reset time delay caused by the diode method is too long.	Zener voltage for a Zener diode must be about 1.2 times higher than the power source since the load may not work under some circumstances.
Varistor method		Yes	Yes	This method makes use of constant-voltage characteristic of the varistor so that no high-voltage is imposed on the contacts. This method causes a reset time delay more or less. It is effective to connect varistor in parallel to the load when the supply voltage is 24 to 48 V and in parallel to the contacts when the supply voltage is 100 to 200 V.	Select the varistor so that the following condition is met for the cut voltage $V_c$ . For AC currents, the value must be multiplied by $\sqrt{2}$ . $V_c > (\text{Current Voltage} \times 1.5)$ If $V_c$ is set too high, however, the voltage cut for high voltages will no longer be effective, diminishing the effect.

# [Phenomenon: Actuator operates but does not conduct]

## ■ Phenomenon check result and cause



<Phenomenon check result>

- Contact resistance is infinite.

<Cause>

There is a silicon gas generating source in the area around the switch and silicon is formed on the contact surface as insulation material.

## ■ The malfunction case

- Silicon oxide is formed on the contact surface which results in contact failure.

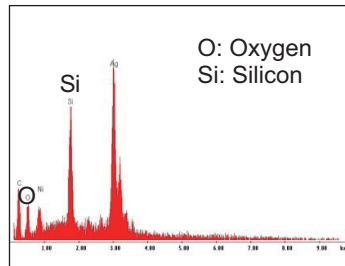
Example) D4C-4229-P

Contact image



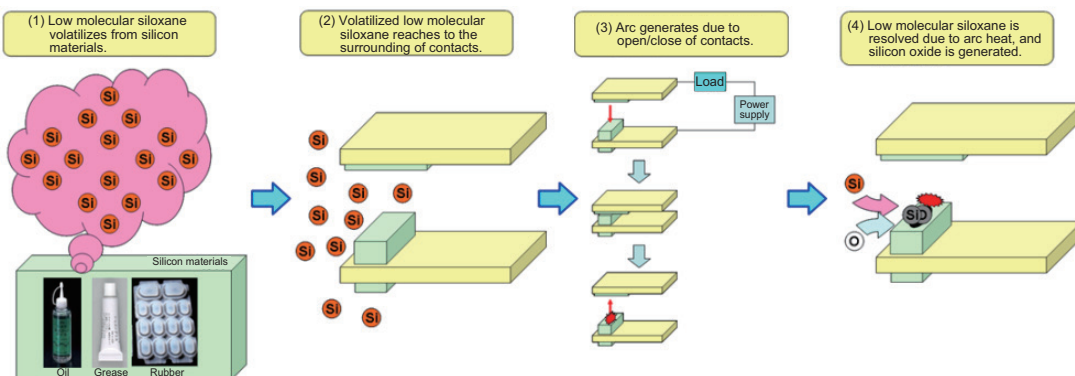
Black foreign objects have formed.

Result of element analysis at ○ section



Silicon oxide detected

Silicon oxide is formed on the contact surface as a result of the reaction between gas that is discharged from silicon-based materials present in the area around the switch and arc heat that is generated when the load is switched.



---

■ **Details of resolution, checkpoints for preventing phenomenon before use**



**Are there any materials that contain silicon (low molecular siloxane) components in the area around where the switch is used?**

The following are examples of sources that generate silicon gas.

[Generating sources]

Silicon-based coating agents, silicon-based adhesive, silicon rubber, silicon oil/grease, silicone-based mold release agent, silicon filler, silicon wiring, etc.

When a silicon gas generating source is present, suppress the generation of arcs by a contact protection circuit, remove the silicon gas generating source from the area around the switch, or change to a different material.

One example would be a silicon-based mold release agent used for a mold when making molded products. Check that there are no such items in the surrounding area.

(The molded parts of OMRON switches use fluorine-based mold release agents.)

Also, when using switches unavoidably in environments where a silicon gas generating source is present, perform periodic inspections or periodic replacements.

# [Phenomenon: Actuator operates but does not conduct]

## ■ Phenomenon check result and cause



<Phenomenon check result>  
 • Contact resistance is infinite.  
 <Cause>  
 The inside of the switch is disassembling.

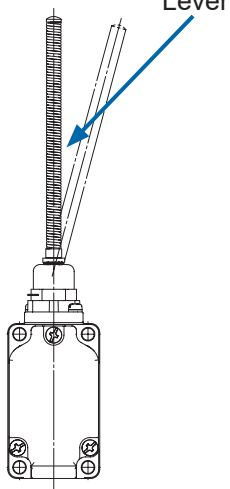
## ■ The malfunction case

### ● Disassembly of switch inside due to pushing in of a flexible rod type from the tip

Example) WLNJ-N

(1) Sudden snap back due to impactful operation on the lever, operation at the bottom of the lever (position close to the base of the spring), or other operations that apply excessive stress will result in the lever breaking.

Overall view



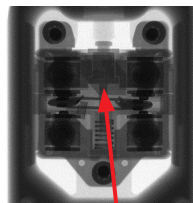
Damaged state



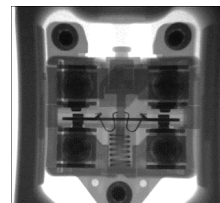
(2) The built-in switch will be damaged if a force of 2,200 to 2,800 N is applied perpendicularly to the lever.

Front	Enlarged view of the actuator tip	Cover inside
Perpendicular load 	Perpendicular load application mark  ○ : Dent present	Perpendicular load application  No abnormalities in an assembled state

X-ray image of a built-in switch: Abnormal



X-ray image of a built-in switch: Normal



Movable piece comes loose and causes damage to the inside.

## ■ Details of resolution, checkpoints for preventing phenomenon before use



The WLNJ-N model may be damaged during shock operation or when a perpendicular load is applied.

- During operation, set under the following conditions.
  - Set the operating distance at  $PT = 20 \pm 10$  mm.
  - Set the permissible operating speed to 1 mm/sec to 0.5 m/sec.
  - Set the permissible frequency to 30 operations or less/minute.
- Take consideration not to apply external force from the direction perpendicular to the actuator due to operation in the vertical direction, dropping, etc.  
 Check the operation and make sure it works properly if it falls and falls from the tip.

# [Phenomenon: Actuator operates but does not conduct]

## ■ Phenomenon check result and cause



<Phenomenon check result>

- Contact resistance is infinite.

<Cause>

Dust and other foreign objects stick to the switch and obstruct operation.

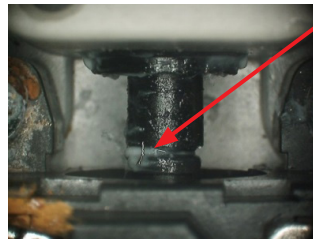
## ■ The malfunction case

- Foreign objects entering from the periphery of the switch adhere to the contacts which results in contact failure.  
Example) WLCA2-N

Image of appearance

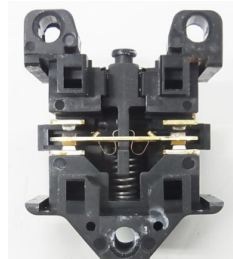


Cover removed state

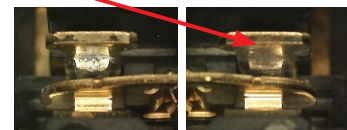


Adhesion of foreign objects is visible.

Adhesion of foreign objects is visible.



View of contact



\* In the case example this time, as a result of analyzing the components, carbon and oxygen have been detected, and there is the possibility that oil liquid has entered inside the switch.

## ■ Details of resolution, checkpoints for preventing phenomenon before use



**Are there foreign objects, liquids, etc. in the area around the switch?**

Although limit switches are to IP67 specification, the entry of foreign objects, liquids, etc. cannot be completely prevented when they are constantly present in the area around switches. As a preventive measure, either cover switches with a cover or take other measures, or the use of a molded type switch is recommended.

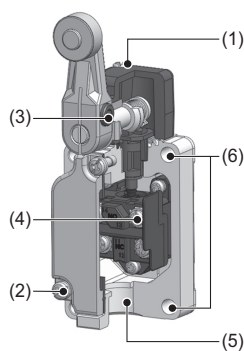
When using at places, for example, where the switch is subjected to foreign objects and liquid, evaluate the switch under actual operating conditions beforehand and use the switch under adequate conditions.



**When screws at various locations are tightened with little force, foreign objects, liquids, etc. get inside switches.**

Appropriate tightening torques are listed on the right.

Tighten at the recommended torque.



No.	Item	Torque	Screw type
(1)	Head mounting screw	0.78 to 0.88 N·m	M3.5 screw
(2)	Cover mounting screw	1.18 to 1.37 N·m	M4 screw
(3)	Allen-head bolt (for securing the roller lever)	4.90 to 5.88 N·m	M5 Allen-head bolt
(3)	Allen-head bolt (for securing the roller lever)	0.88 to 1.08 N·m	M8 hexagon socket set screw
(4)	Terminal screw	0.59 to 0.78 N·m	M3.5 screw
(5)	Connectors	1.77 to 2.16 N·m	G1/2 or Pg13.5 or M20 or 1/2-14NPT
(6)	Unit mounting screw	4.90 to 5.88 N·m	M5 screw

# [Phenomenon: Actuator operates but does not conduct]

## ■ Phenomenon check result and cause



<Phenomenon check result>

- Contact resistance is infinite.

<Cause>

There is an ammonium dihydrogen phosphate-based gas generating source in the area around the switch and the ammonium dihydrogen phosphate-based gas is formed on the contact surface as an insulating material of the contact.

## ■ The malfunction case

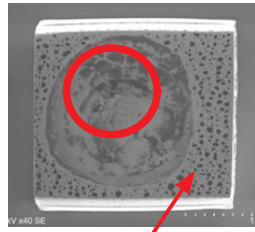
- Foreign matter is generated by the ammonium dihydrogen phosphate-based gas on the contact surface, causing a contact failure.

Example) WLCA2-N

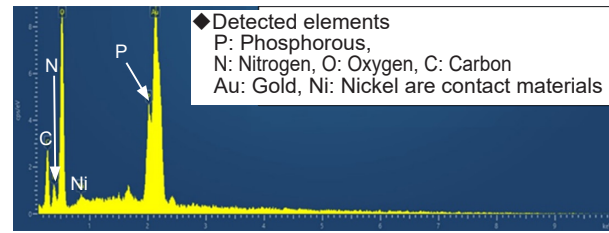
Contact image



Contact SEM image



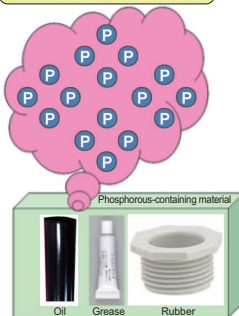
Result of element analysis at ○ section



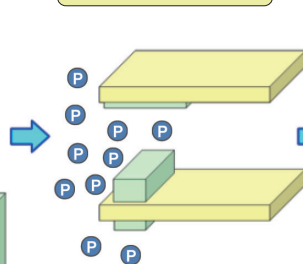
Generated in spots

The ammonium dihydrogen phosphate-based gas is formed on the contact surface by the reaction of the gas emitted from the phosphorus-containing material around the switch with the arc heat generated when the load is opened and closed.

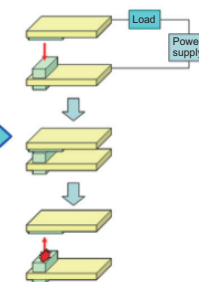
(1) The ammonium dihydrogen phosphate-based gas volatilizes by the phosphorus-containing material.



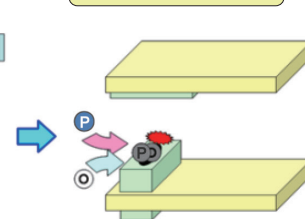
(2) The volatilized ammonium dihydrogen phosphate-based gas reaches around the contact.



(3) Arc generates due to open/close of contacts.



(4) Foreign matter is generated on the contact surface by the reaction with the arc heat generated when the load is opened and closed.



---

## ■ Details of resolution, checkpoints for preventing phenomenon before use



**Are there any materials that contain phosphorus (ammonium dihydrogen phosphate) components in the area around where the switch is used?**

The following are examples of sources that generate ammonium dihydrogen phosphate-based gas.

### [Generating sources]

Heat-shrinkable tubes, lead wires, connectors, resin materials containing red phosphorus, oils, industrial waste water, corroded food (waste, garbage), seawater, pesticides, smoking materials, chemicals, etc.

If there is a material containing a phosphorus (ammonium dihydrogen phosphate) component in the area around where the switch is used, remove it from around the switch or change it to another material.

The followings are the examples. However, this does not guarantee the performance of the switch. When using the switch, evaluate it on the actual device and take action at your own discretion.

- For a heat-shrinkable tube
  - (1) Heat-shrinkable tubes with surface (water-resistant) treatment make it difficult for phosphate reactions to progress, and generation of gas can be suppressed. There are the following two types of water-resistant red phosphorus tubes:
    - SUMITUBE NHR2
    - SUMITUBE NHR4
  - (2) Do not use a heat-shrinkable tube, but use a round terminal with nylon insulation coating for M3.5 for wiring.  
Example) N1.25-M3 (RAC1.25-3.5) (manufactured by J.S.T. Mfg. Co., Ltd.)
- Connector  
OMRON SC series

If it is unavoidable to use the switch in an environment where materials containing phosphorus (ammonium dihydrogen phosphate) components are present, perform periodic inspections and periodic replacement.



# [Phenomenon: Actuator does not operate]

## ■ Phenomenon check result and cause



<Phenomenon check result>

- Both the operating distance and operating force cannot be measured.

<Cause>

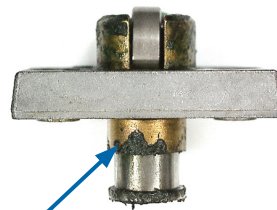
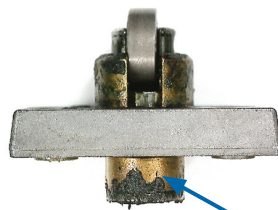
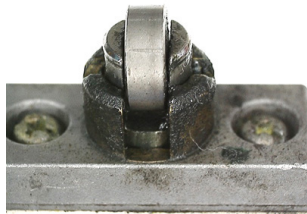
Dust and other foreign objects stick to the switch and obstruct operation.

## ■ The malfunction case

- Oil entering from the periphery of the switch adheres to the contacts which results in contact failure.  
Case example: D4C-6303

Image of appearance

Head periphery



Adhesion of foreign objects is visible.

## ■ Details of resolution, checkpoints for preventing phenomenon before use

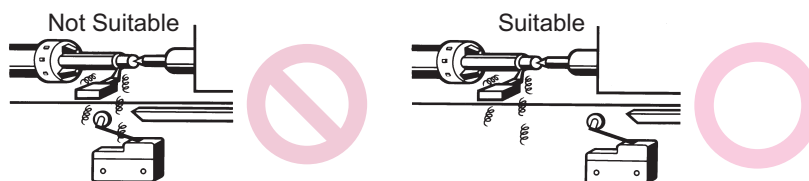


**Are there foreign objects, liquids, etc. directly adhering to the switch?**

Although limit switches are to IP67 specification, the entry of foreign objects, liquids, etc. to sliding parts cannot be completely prevented.

Install the switch in a location that is not directly subject to foreign objects, liquids, etc.

The actuator and switch must also be protected from the accumulation of foreign objects and liquids.



# [Phenomenon: Actuator does not operate]

## ■ Phenomenon check result and cause



<Phenomenon check result>

- Operating force is variable (snagging).

<Cause>

Setting an excessive stroke causes the shaft to deform and not operate.

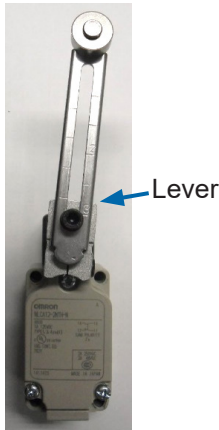
## ■ The malfunction case

- **Setting an excessive stroke causes trouble in actuator return.**

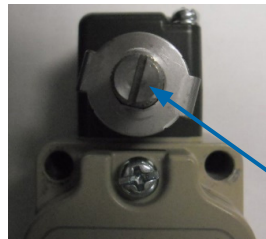
Example) WLCA12-2NTH-N

Setting an excessive stroke causes the shaft to deform, and the plunger snags and can no longer return.

Image of appearance



Lever removed state: Deformed



Groove at an angle

Lever removed state: Normal



When the lever is normal, the groove is not at an angle.



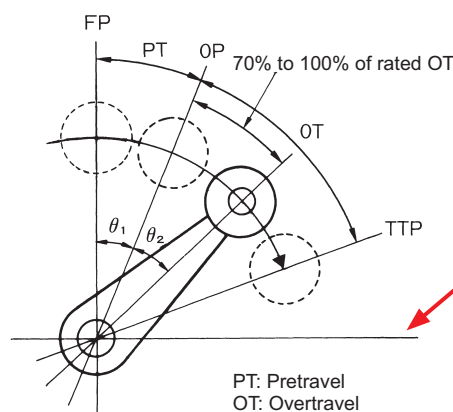
Shaft deformation  
→ Twisting

## ■ Details of resolution, checkpoints for preventing phenomenon before use



If the lever is pushed in beyond the position where it does not move, the shaft that interlocks with the lever is deformed and may cause faulty operation.

Set the operating angle to within the maximum value of  $PT + OT = TTP$  (see lever operation diagram) including movement by inertia.



Position where lever does not move

PT: Pretravel  
OT: Overtravel

# [Phenomenon: Actuator does not operate]

## ■ Phenomenon check result and cause



<Phenomenon check result>

- Switch does not turn ON or OFF.

<Cause>

The installation direction of the plunger when the operating direction is changed is different.

## ■ The malfunction case

With the WL-N model, the operating direction of the head can be changed.

By removing the head and then changing the direction of the operational plunger, one of three operating directions can be selected.

However, the switch does not turn ON or OFF unless it is installed in the designated direction.

## ■ Details of resolution, checkpoints for preventing phenomenon before use

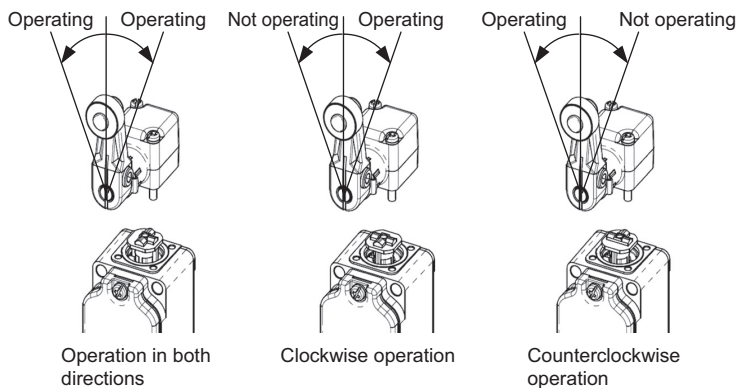


Note that the setting method differs according to the WL-N specifications.

### Setting One-side Operation for Basic Models

The output of the Switch will be changed, regardless of which direction the lever is pushed.

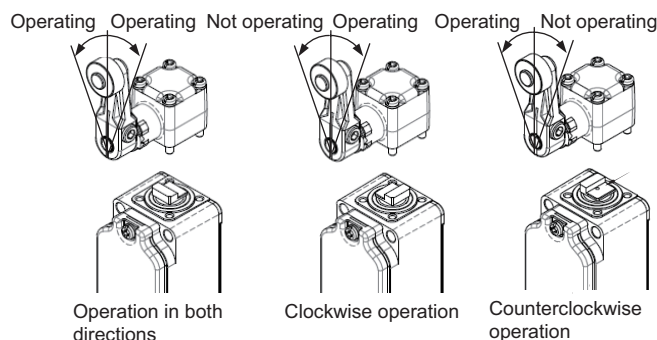
The output of the Switch will only be changed when the lever is pushed in one direction.



### Setting One-side Operation for High-precision Models

The output of the Switch will be changed, regardless of which direction the lever is pushed.

The output of the Switch will only be changed when the lever is pushed in one direction.



# [Phenomenon: Actuator does not operate]

## ■ Phenomenon check result and cause



<Phenomenon check result>

- The actuator cannot be pressed up to where the switch turns ON.

<Cause>

A heavy load is applied from the side which deforms and damages the actuator and prevents the switch from turning ON.

## ■ The malfunction case

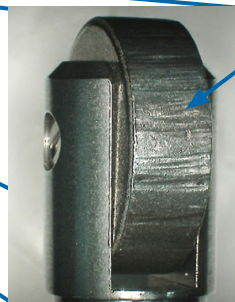
- Cracking has occurred in the head, which causes the plunger to tilt and prevent it from operating.

Example) WLD28-RP-N

Overall view

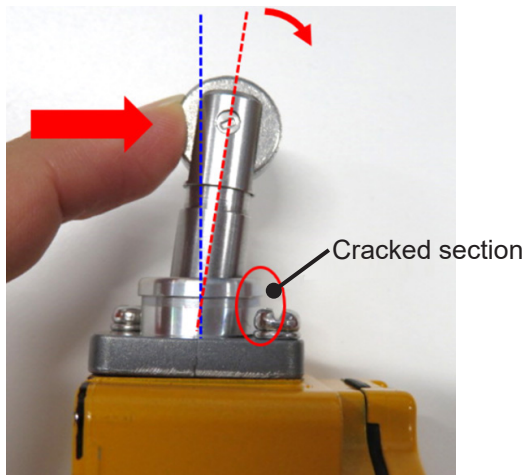


Enlarged view of roller

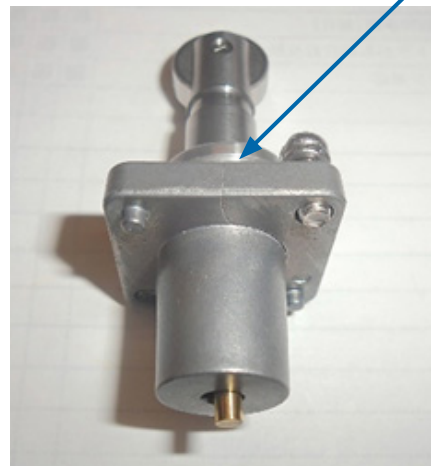


There are many pronounced dents around the entire circumference of the roller. These dents are the result of contact with the operating body under a heavy load.

Cracks have occurred which causes the actuator to tilt towards the front, preventing force from being transmitted to the built-in switch.



Cracks occur by being repeatedly subjected to excessive force.



## ■ Details of resolution, checkpoints for preventing phenomenon before use

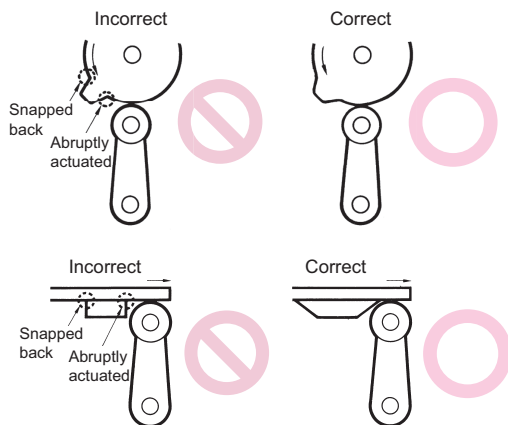


### Is the operation of the head roller accompanied by shock?

- If the dog moves at a high speed and the slope of impact is steep, the actuator may be deformed and damaged. Also, if the operation of the head roller is accompanied by shock, the stress limits of the mounting may be exceeded and cracks may occur.

Check the following precautions, and design the dog to have a shape that is suitable for the operation speed and that reduces the shock on the switch.

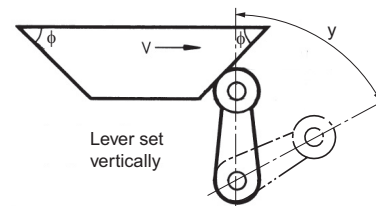
### • When the operating body has snap back



### • Dog angle and speed

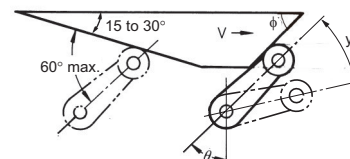
**Dog speed: 0.5 m/s max.**

V max. (m/s)	$\phi$	y*
0.4	30°	0.8 (TT)
0.25	45°	Can be taken to
0.1	60°	80% of total travel.



**Dog speed: 0.5 m/s min.**

If the speed of the overtravel dog is comparatively high, make the rear edge of the dog smooth at an angle of 15° to 30° or make it in the shape of a quadratic curve. Then lever shaking will be reduced.



V max. (m/s)	$\theta$	$\phi$	y*
0.5	45°	45°	0.5 to 0.8 (TT)
0.6	50°	40°	0.5 to 0.8 (TT)
1.3	55° to 60°	30° to 35°	0.5 to 0.7 (TT)
2	65° to 75°	15° to 25°	0.5 to 0.7 (TT)

\* The above y values indicate the ratio ranges based on TT (total travel). Therefore, the optimum pressing distance of the dog is between 50% and 80% (or 50% and 70%).

# [Phenomenon: Actuator does not operate]

## ■ Phenomenon check result and cause



<Phenomenon check result>

- The actuator cannot be pressed up to where the switch turns ON.

<Cause>

A heavy load is applied from the side which wears the actuator and prevents the switch from turning ON.

## ■ The malfunction case

- When the set dog angle is large, the bearing becomes abnormally worn which causes faulty operation.  
Example) D4C-9001

Image of appearance



Image of roller



The plunger is tilting to the right.

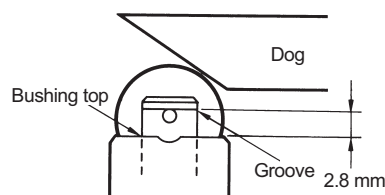


## ■ Details of resolution, checkpoints for preventing phenomenon before use



**Are the dog angle and surface roughness appropriate?**

- Operation error preventive measures, shape of cam and dog, operating frequency, overtravel, etc. have a significant effect on the durability and precision.  
For this reason, the dog angle must be 30° max., the surface roughness of the dog must be  $\nabla\nabla\nabla$  (6.3 S) min., and hardness must be Hv 400 to 500.
- To set the plunger stroke without excess or deficiency, set the dog, cam, etc. by aligning them with the grooves that are the appropriate setting positions. The appropriate setting position is where the plunger groove fits the bushing top.



# [Phenomenon: Actuator operates but is always conducting]

## ■ Phenomenon check result and cause



<Phenomenon check result>

- NO contact is in a conducting state.

<Cause>

During normally open (NO) use, the contact remains in a conducting state when the operating body is not completely away from the actuator.

## ■ Details of resolution, checkpoints for preventing phenomenon before use

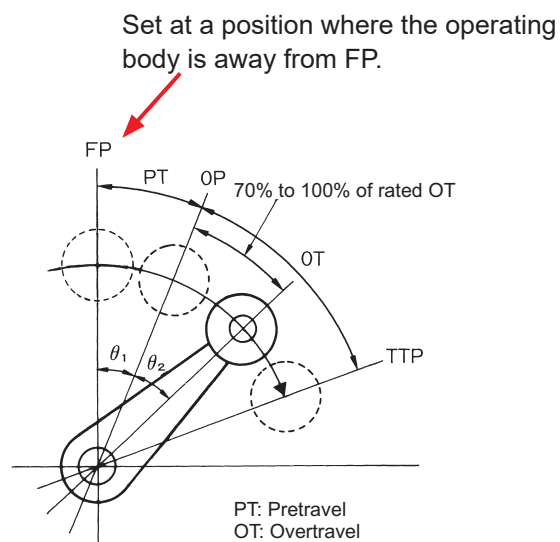


- (1) Set the stroke so that the operating body is completely away from the actuator, the switch returns to the FP (free position), and slight deviation or error is absorbed.

[Lever specification]



[Lever operation diagram]



- (2) Are the switch mounting screws loose or is the operating body deformed?

If the switch mounting screws are loose or there is deformation or distortion on the operating body side, there is the possibility that normal operation cannot be performed even if a correct stroke is set.

Also, even though there may not be a problem at the early stages, the above trouble may occur over the course of time. So, pay attention when installing the switch and also perform periodic inspections.

# [Phenomenon: Actuator operates but is always conducting]

## ■ Phenomenon check result and cause



<Phenomenon check result>  
 • NO contact is in a conducting state.  
 <Cause>  
 Contact is welded due to overcurrent.

## ■ The malfunction case

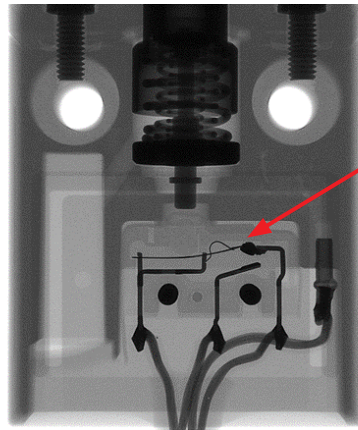
### ● Contact is welded.

Example) D4C-1220-P

Image of the entire switch

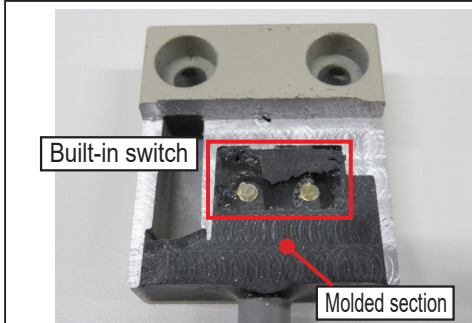


X-ray image of a built-in switch



The contact is welded and detached protrusions are visible.

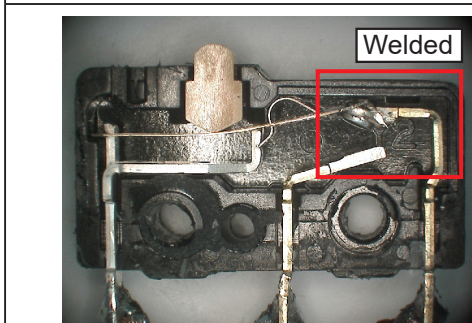
Cutaway view of switch body



Built-in switch after removal from switch body



Inside of built-in switch



Enlarged view of contact of NC side (welded)





# [Phenomenon: Actuator operates but is always conducting]

## ■ Details of resolution, checkpoints for preventing phenomenon before use



### Is the circuit configured to allow a current exceeding the rating to flow to the switch?

Take care to prevent an overcurrent from flowing to the switch. (Including short-circuit current)

Also, depending on the type of load, there is a large difference between the inrush current and the steady-stage current or the steady-state current and the reverse voltage, and there is a possibility that a current at the rating or above will flow. So, also check these.

\* Refer to the case example of a general contact protection circuit provided for reference.

## Case example of a general contact protection circuit

Circuit example	Applicable current		Feature	Element selection	
	AC	DC			
CR circuit		See note.	Yes	<b>Note:</b> When AC is switched, the load impedance must be lower than the C and R impedance.	C: 0.5 to 1 $\mu$ F per switching current (1 A) R: 0.5 to 1 $\Omega$ per switching voltage (1 V) The values may change according to the characteristics of the load. The capacitor suppresses the spark discharge of current when the contacts are open. The resistor limits the inrush current when the contacts are closed again. Consider these roles of the capacitor and resistor and determine the ideal capacitance and resistance values from experimentation.
		Yes	Yes	The operating time will increase if the load is a relay or solenoid. It is effective to connect the CR circuit in parallel to the load when the power supply voltage is 24 or 48 V and in parallel to the contacts when the power supply voltage is 100 to 200 V.	Use a capacitor with a dielectric strength between 200 and 300 V. When AC is switched, make sure that the capacitor has no polarity. If, however, the ability to control arcs between contacts is a problem for high DC voltage, it may be more effective to connect a capacitor and resistor between the contacts across the load. Check the results by testing in the actual application.
Diode method		No	Yes	Energy stored in the coil is changed into current by the diode connected in parallel to the load. Then the current flowing to the coil is consumed and Joule heat is generated by the resistance of the inductive load. The reset time delay in this method is longer than that of the CR method.	The diode must withstand a peak inverse voltage 10 times higher than the circuit voltage and a forward current as high as or higher than the load current.
Diode and Zener diode method		No	Yes	This method will be effective if the reset time delay caused by the diode method is too long.	Zener voltage for a Zener diode must be about 1.2 times higher than the power source since the load may not work under some circumstances.
Varistor method		Yes	Yes	This method makes use of constant-voltage characteristic of the varistor so that no high-voltage is imposed on the contacts. This method causes a reset time delay more or less. It is effective to connect varistor in parallel to the load when the supply voltage is 24 to 48 V and in parallel to the contacts when the supply voltage is 100 to 200 V.	Select the varistor so that the following condition is met for the cut voltage $V_c$ . For AC currents, the value must be multiplied by $\sqrt{2}$ . $V_c > (\text{Current Voltage} \times 1.5)$ If $V_c$ is set too high, however, the voltage cut for high voltages will no longer be effective, diminishing the effect.

# [Phenomenon: Actuator operates but is always conducting]

## ■ Phenomenon check result and cause



<Phenomenon check result>

- NO contact is in a conducting state.

<Cause>

Liquid enters, which causes insulation resistance to drop and a short-circuit.

## ■ The malfunction case

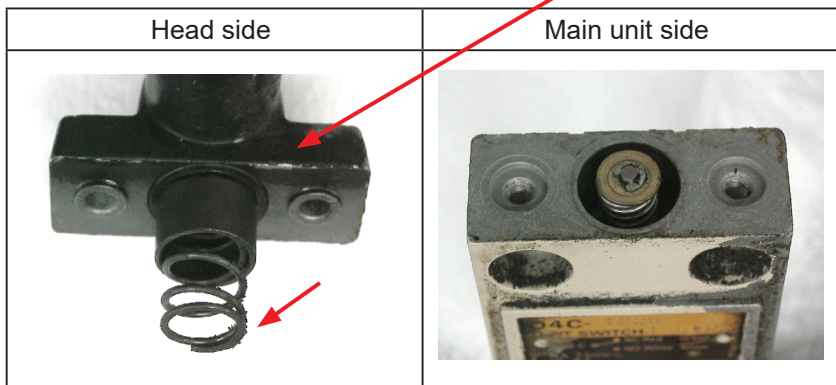
- Liquid entering from the periphery of the switch adheres to the contacts which causes a short-circuit.  
Example) D4C-1220

Adhesion of foreign objects is visible.

Image of appearance



Head side



Main unit side



Appearance of built-in switch



Inside of built-in switch



In the case example this time, as a result of analyzing the components, carbon and oxygen have been detected, and there is the possibility that oil liquid has entered inside the switch.

## ■ Details of resolution, checkpoints for preventing phenomenon before use



### Are there foreign objects, liquids, etc. in the area around the switch?

Although limit switches are to IP67 specification, the entry of foreign objects, liquids, etc. cannot be completely prevented when they are constantly present in the area around switches. As a preventive measure, either cover switches with a cover or take other measures, or the use of a molded type switch is recommended.

When using at places, for example, where the switch is subjected to foreign objects and liquid, evaluate the switch under actual operating conditions beforehand and use the switch under adequate conditions.

# [Phenomenon: Actuator does not operate]

## ■ Phenomenon check result and cause



<Phenomenon check result>

- Both the operating distance and operating force cannot be measured.

<Cause>

Dust and other foreign objects stick to the switch and obstruct operation.

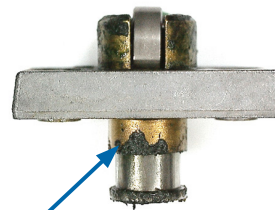
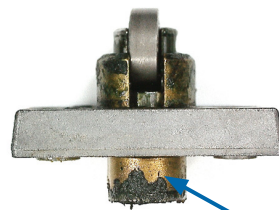
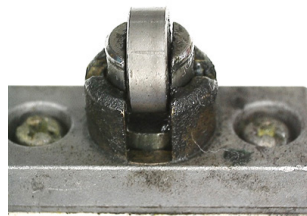
## ■ The malfunction case

- Oil entering from the periphery of the switch adheres to the contacts which results in contact failure.  
Case example: D4C-6303

Image of appearance



Head periphery



Adhesion of foreign objects is visible.

## ■ Details of resolution, checkpoints for preventing phenomenon before use

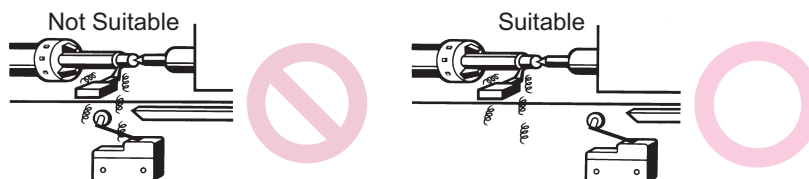


**Are there foreign objects, liquids, etc. directly adhering to the switch?**

Although limit switches are to IP67 specification, the entry of foreign objects, liquids, etc. to sliding parts cannot be completely prevented.

Install the switch in a location that is not directly subject to foreign objects, liquids, etc.

The actuator and switch must also be protected from the accumulation of foreign objects and liquids.



# [Phenomenon: Actuator does not operate]

## ■ Phenomenon check result and cause



<Phenomenon check result>

- The actuator cannot be pressed up to where the switch turns ON.

<Cause>

A heavy load is applied from the side which deforms and damages the actuator and prevents the switch from turning ON.

## ■ The malfunction case

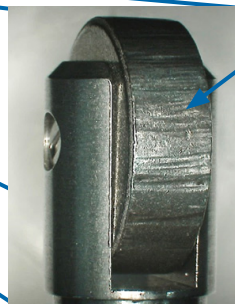
- Cracking has occurred in the head, which causes the plunger to tilt and prevent it from operating.

Example) WLD28-RP-N

Overall view

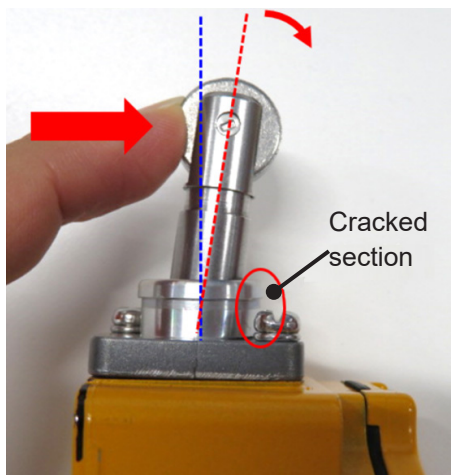


Enlarged view of roller

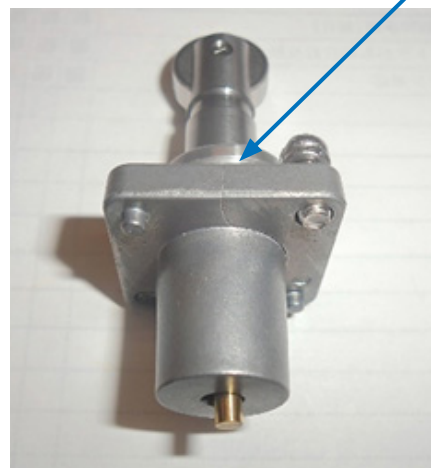


There are many pronounced dents around the entire circumference of the roller. These dents are the result of contact with the operating body under a heavy load.

Cracks have occurred which causes the actuator to tilt towards the front, preventing force from being transmitted to the built-in switch.



Cracks occur by being repeatedly subjected to excessive force.



## ■ Details of resolution, checkpoints for preventing phenomenon before use



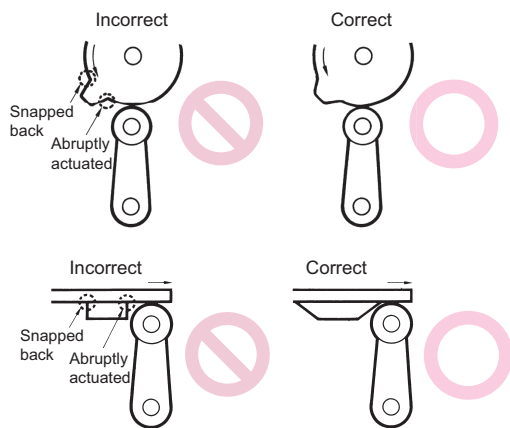
### Is the operation of the head roller accompanied by shock?

- If the dog moves at a high speed and the slope of impact is steep, the actuator may be deformed and damaged.

Also, if the operation of the head roller is accompanied by shock, the stress limits of the mounting may be exceeded and cracks may occur.

Check the following precautions, and design the dog to have a shape that is suitable for the operation speed and that reduces the shock on the switch.

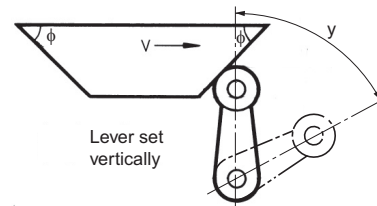
### • When the operating body has snap back



### • Dog angle and speed

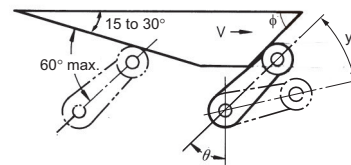
**Dog speed: 0.5 m/s max.**

V max. (m/s)	$\phi$	y*
0.4	30°	0.8 (TT)
0.25	45°	Can be taken to
0.1	60°	80% of total travel.



**Dog speed: 0.5 m/s min.**

If the speed of the overtravel dog is comparatively high, make the rear edge of the dog smooth at an angle of 15° to 30° or make it in the shape of a quadratic curve. Then lever shaking will be reduced.



V max. (m/s)	$\theta$	$\phi$	y*
0.5	45°	45°	0.5 to 0.8 (TT)
0.6	50°	40°	0.5 to 0.8 (TT)
1.3	55° to 60°	30° to 35°	0.5 to 0.7 (TT)
2	65° to 75°	15° to 25°	0.5 to 0.7 (TT)

\* The above y values indicate the ratio ranges based on TT (total travel). Therefore, the optimum pressing distance of the dog is between 50% and 80% (or 50% and 70%).

# [Phenomenon: Actuator does not operate]

## ■ Phenomenon check result and cause



<Phenomenon check result>

- The actuator cannot be pressed up to where the switch turns ON.

<Cause>

A heavy load is applied from the side which wears the actuator and prevents the switch from turning ON.

## ■ The malfunction case

- When the set dog angle is large, the bearing becomes abnormally worn which causes faulty operation.  
Example) D4C-9001

Image of appearance



Image of roller



The plunger is tilting to the right.

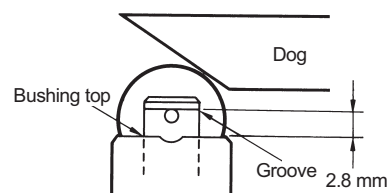


## ■ Details of resolution, checkpoints for preventing phenomenon before use



Are the dog angle and surface roughness appropriate?

- Operation error preventive measures, shape of cam and dog, operating frequency, overtravel, etc. have a significant effect on the durability and precision.  
For this reason, the dog angle must be  $30^\circ$  max., the surface roughness of the dog must be  $\nabla\nabla\nabla$  (6.3 S) min., and hardness must be Hv 400 to 500.
- To set the plunger stroke without excess or deficiency, set the dog, cam, etc. by aligning them with the grooves that are the appropriate setting positions. The appropriate setting position is where the plunger groove fits the bushing top.



# [Phenomenon: Switch cannot be installed]

## ■ Phenomenon check result and cause



<Phenomenon check result>

- The switch cannot be secured to the panel.

<Cause>

- Panel holes are out of position.
- Screws cannot be tightened due to crushed screw threads.

## ■ Details of resolution, checkpoints for preventing phenomenon before use

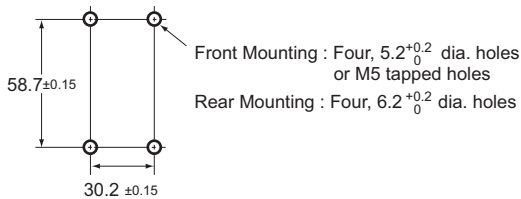


Are the panel hole machining dimensions for installing the switch in accordance with the specified values?

- To install the switch, make an installation panel to the following mounting dimensions. Tighten the screws to the appropriate tightening torque.

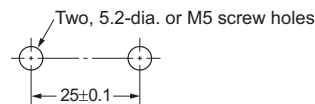
WLN/WLG

Appropriate tightening torque: 4.90 to 5.88 N·m M5 screw



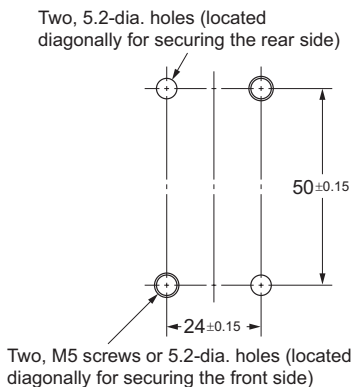
D4C/D4CC

Appropriate tightening torque: 4.90 to 5.88 N·m M5 screw



HL

Appropriate tightening torque: 4.90 to 5.88 N·m M5 screw



D4A

Appropriate tightening torque: 4.90 to 5.88 N·m M5 screw

Model	G1/2 Conduit	Mounting locations
	D4A-3□□□N D4A-4□□□N	
Front Mounting		
Rear Mounting		

Note: For 1/2-14NPT conduits, use Two, No.10-32UNF (depth: 10) back-mounting screws.

# [Phenomenon: Operation not displayed]

## ■ Phenomenon check result and cause



<Phenomenon check result>

- Display does not light even if power is supplied.

<Cause>

The internal circuit is damaged due to the effect of overvoltage, overcurrent, and noise.

## ■ The malfunction case

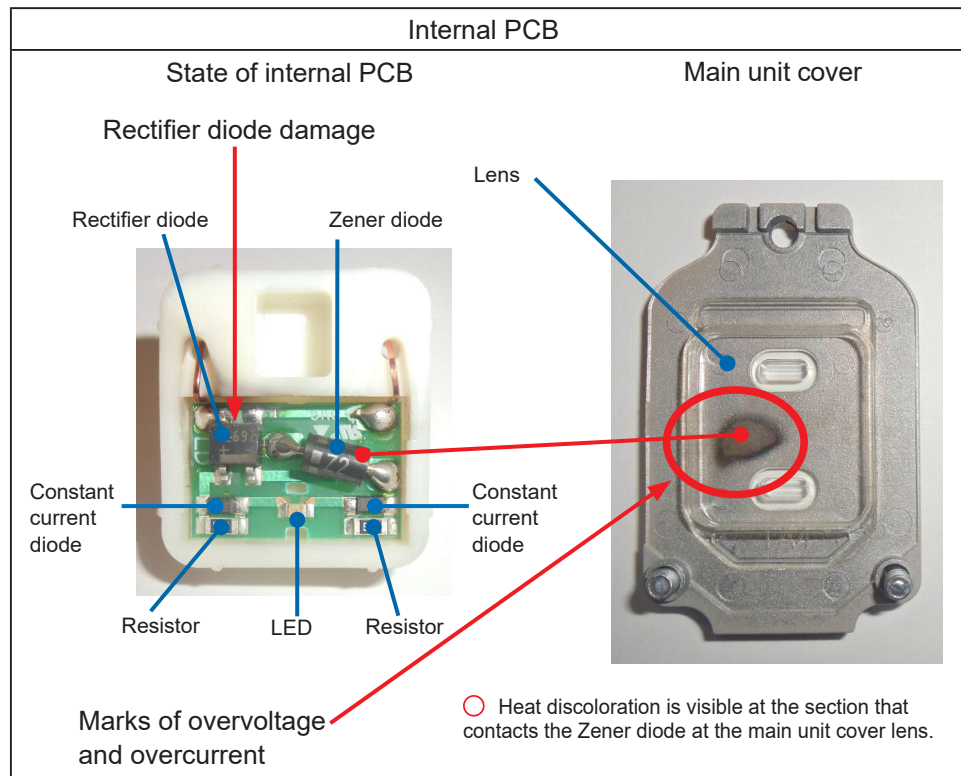
- The built-in rectifier diode is damaged and the circuit is interrupted, which results in the display not lighting.  
Example) WLCA2-LD-N

Image of appearance



Cover

Cover opened state



## ■ Details of resolution, checkpoints for preventing phenomenon before use



Are there any factors that may cause abnormal voltage exceeding the rated voltage to enter?

- The rectifier diode serves as a cutoff to prevent damage to internal circuits if noise, surges, or other voltage abnormalities exceeding the rated voltage enter the circuits.

The damage was caused by a short-circuit state and short-circuit current flow.

- If there is a possibility of abnormal voltage such as noise or surge entering, consider noise countermeasures such as inserting protective elements (varistor, etc.) between switch terminals or separating parallel wiring if present.

\* Case example of noise

Terminal-to-terminal noise from peer devices / Inductive noise from cables wired in parallel



# [Phenomenon: Connector cannot be connected]

## ■ Phenomenon check result and cause



<Phenomenon check result>

- Cannot tighten the connector to the switch body.

<Cause>

The connector cannot be tightened as the currently used conduits do not match the main unit specifications.

Or, the connector cannot be tightened due to foreign objects adhering to the screw threads.

## ■ The malfunction case

- The connector cannot be tightened due to crushed screw threads at the conduit opening. The screw threads were crushed as the screw was tightened into a conduit having a different specification.

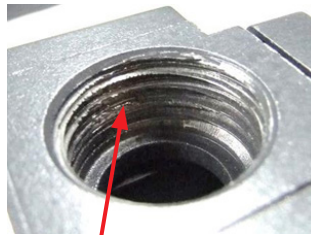
Example) D4A-4918N

Image of appearance



Conduit opening

Screw threads at conduit opening



Screw threads crushed

Conduit installed state



Cannot tighten (there is a space)

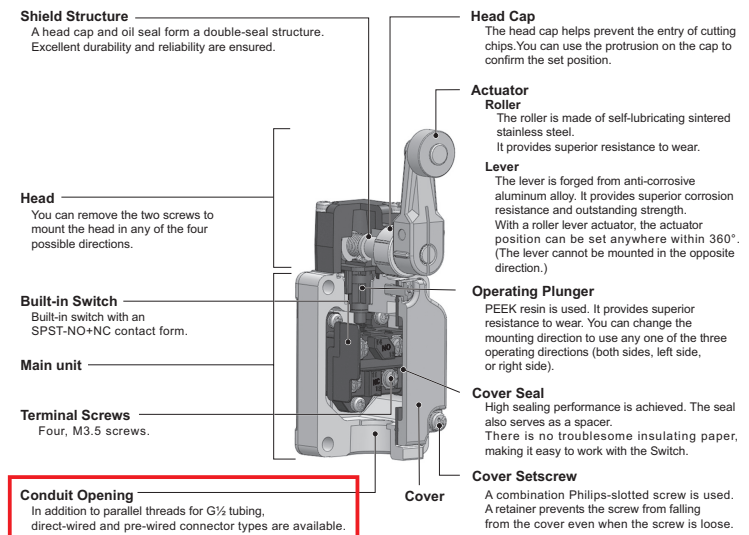
## ■ Details of resolution, checkpoints for preventing phenomenon before use



**Do the conduit specifications of the switch and connector match?**

- On a switch, the conduit specifications are determined by model. Select and use a connector that is compatible with the specifications.
- Compatible screw types are G1/2, Pg13.5, M20, and 1/2-14NPT. The recommended tightening torque is 1.77 to 2.16 N·m.

[Structure of switch]





# Terms and Conditions Agreement

## **Read and understand this catalog.**

Please read and understand this catalog before purchasing the products. Please consult your OMRON representative if you have any questions or comments.

## **Warranties.**

- (a) Exclusive Warranty. Omron's exclusive warranty is that the Products will be free from defects in materials and workmanship for a period of twelve months from the date of sale by Omron (or such other period expressed in writing by Omron). Omron disclaims all other warranties, express or implied.
- (b) Limitations. OMRON MAKES NO WARRANTY OR REPRESENTATION, EXPRESS OR IMPLIED, ABOUT NON-INFRINGEMENT, MERCHANTABILITY OR FITNESS FOR A PARTICULAR PURPOSE OF THE PRODUCTS. BUYER ACKNOWLEDGES THAT IT ALONE HAS DETERMINED THAT THE PRODUCTS WILL SUITABLY MEET THE REQUIREMENTS OF THEIR INTENDED USE.

Omron further disclaims all warranties and responsibility of any type for claims or expenses based on infringement by the Products or otherwise of any intellectual property right. (c) Buyer Remedy. Omron's sole obligation hereunder shall be, at Omron's election, to (i) replace (in the form originally shipped with Buyer responsible for labor charges for removal or replacement thereof) the non-complying Product, (ii) repair the non-complying Product, or (iii) repay or credit Buyer an amount equal to the purchase price of the non-complying Product; provided that in no event shall Omron be responsible for warranty, repair, indemnity or any other claims or expenses regarding the Products unless Omron's analysis confirms that the Products were properly handled, stored, installed and maintained and not subject to contamination, abuse, misuse or inappropriate modification. Return of any Products by Buyer must be approved in writing by Omron before shipment. Omron Companies shall not be liable for the suitability or unsuitability or the results from the use of Products in combination with any electrical or electronic components, circuits, system assemblies or any other materials or substances or environments. Any advice, recommendations or information given orally or in writing, are not to be construed as an amendment or addition to the above warranty.

See <http://www.omron.com/global/> or contact your Omron representative for published information.

## **Limitation on Liability; Etc.**

OMRON COMPANIES SHALL NOT BE LIABLE FOR SPECIAL, INDIRECT, INCIDENTAL, OR CONSEQUENTIAL DAMAGES, LOSS OF PROFITS OR PRODUCTION OR COMMERCIAL LOSS IN ANY WAY CONNECTED WITH THE PRODUCTS, WHETHER SUCH CLAIM IS BASED IN CONTRACT, WARRANTY, NEGLIGENCE OR STRICT LIABILITY.

Further, in no event shall liability of Omron Companies exceed the individual price of the Product on which liability is asserted.

## **Suitability of Use.**

Omron Companies shall not be responsible for conformity with any standards, codes or regulations which apply to the combination of the Product in the Buyer's application or use of the Product. At Buyer's request, Omron will provide applicable third party certification documents identifying ratings and limitations of use which apply to the Product. This information by itself is not sufficient for a complete determination of the suitability of the Product in combination with the end product, machine, system, or other application or use. Buyer shall be solely responsible for determining appropriateness of the particular Product with respect to Buyer's application, product or system. Buyer shall take application responsibility in all cases.

NEVER USE THE PRODUCT FOR AN APPLICATION INVOLVING SERIOUS RISK TO LIFE OR PROPERTY OR IN LARGE QUANTITIES WITHOUT ENSURING THAT THE SYSTEM AS A WHOLE HAS BEEN DESIGNED TO ADDRESS THE RISKS, AND THAT THE OMRON PRODUCT(S) IS PROPERLY RATED AND INSTALLED FOR THE INTENDED USE WITHIN THE OVERALL EQUIPMENT OR SYSTEM.

## **Programmable Products.**

Omron Companies shall not be responsible for the user's programming of a programmable Product, or any consequence thereof.

## **Performance Data.**

Data presented in Omron Company websites, catalogs and other materials is provided as a guide for the user in determining suitability and does not constitute a warranty. It may represent the result of Omron's test conditions, and the user must correlate it to actual application requirements. Actual performance is subject to the Omron's Warranty and Limitations of Liability.

## **Change in Specifications.**

Product specifications and accessories may be changed at any time based on improvements and other reasons. It is our practice to change part numbers when published ratings or features are changed, or when significant construction changes are made. However, some specifications of the Product may be changed without any notice. When in doubt, special part numbers may be assigned to fix or establish key specifications for your application. Please consult with your Omron's representative at any time to confirm actual specifications of purchased Product.

## **Errors and Omissions.**

Information presented by Omron Companies has been checked and is believed to be accurate; however, no responsibility is assumed for clerical, typographical or proofreading errors or omissions.

**OMRON Corporation Industrial Automation Company**

**Kyoto, JAPAN**

**Contact : [www.ia.omron.com](http://www.ia.omron.com)**

**Regional Headquarters**

**OMRON EUROPE B.V.**

Wegalaan 67-69, 2132 JD Hoofddorp  
The Netherlands  
Tel: (31) 2356-81-300 Fax: (31) 2356-81-388

**OMRON ELECTRONICS LLC**

2895 Greenspoint Parkway, Suite 200  
Hoffman Estates, IL 60169 U.S.A.  
Tel: (1) 847-843-7900 Fax: (1) 847-843-7787

**OMRON ASIA PACIFIC PTE. LTD.**

438B Alexandra Road, #08-01/02 Alexandra  
Technopark, Singapore 119968  
Tel: (65) 6835-3011 Fax: (65) 6835-3011

**OMRON (CHINA) CO., LTD.**

Room 2211, Bank of China Tower,  
200 Yin Cheng Zhong Road,  
PuDong New Area, Shanghai, 200120, China  
Tel: (86) 21-6023-0333 Fax: (86) 21-5037-2388

**Authorized Distributor:**

©OMRON Corporation 2025 All Rights Reserved.  
In the interest of product improvement,  
specifications are subject to change without notice.

**Cat. No. C154-E1-02** 0925 (0325)