

TYPE WS02-CFSC1-E Network Configurator

Installation Guide

Thank you for purchasing the WS02-CFSC1-E Network Configurator. This installation guide describes how to install the WS02-CFSC1-E. Please refer to the following manual for network establishment procedures, maintenance procedures for DeviceNet Safety devices using Maintenance Tool, and precautions for the Network Configurator/Maintenance Tool:

- System Configuration Manual (Cat. No. Z905-E1)

The following operation manuals are also available:

- Safety Network Controller Operation Manual (Cat. No. Z906-E1)
- Safety I/O Terminal Operation Manual (Cat. No. Z904-E1)
- DeviceNet Operation Manual (Cat. No. W267-E1)

Please keep this installation guide in a convenient location for easy reference.

OMRON Corporation

0631696-9 E

1. System Requirements

The following computer system is required in order to use the Network Configurator/Maintenance Tool.

Item	Requirement	
OS (English or Japanese)	Microsoft Windows 2000 (Service Pack 3 or higher) or XP	Microsoft Windows Vista (except for 64-bit version)
Computer	IBM PC/AT or compatible with a Pentium II 333-MHz processor or better A Pentium III 1-GHz processor is recommended.	IBM PC/AT or compatible with a processor recommended by Microsoft A speed of 1 GHz or higher is recommended.
Memory	At least 256 MB of physical memory is required. At least 512 MB is recommended.	At least 512 MB of physical memory is required. At least 1 GB is recommended.
Hard disk	At least 200 MB of available space is required.	
Monitor	Monitor with a high-resolution display of SVGA 800 x 600 or better and at least 256 colors	
Disk drives	CD-ROM drive	
Communications port for connection	At least one of the following communications ports is required. • USB port: To go via a NE1A-series or NE0A-series USB port (USB 1.1). • Ethernet port: To online via Ethernet. • DeviceNet Interface Card (3G8F7-DRM21 or 3G8E2-DRM21-V1): To go online via DeviceNet. Note At least one USB port is required as the communications port of the Maintenance Tool.	

- It requires administrative privileges to install this software.
 - It requires administrative privileges to create new user defined FunctionBlock and to import a user defined FunctionBlock.
- Please logon to Windows with administrative rights.

2. Installation/Uninstallation of Network Configurator

The Network Configurator installation CD contains two installers. The table below shows the programs to be installed by the installers.

Installer	Programs Installed
Installer of Network Configurator	• Network Configurator • NE1A Logic Simulator • Password Recovery Tool • Maintenance Tool
Installer of Maintenance Tool alone	• Maintenance Tool

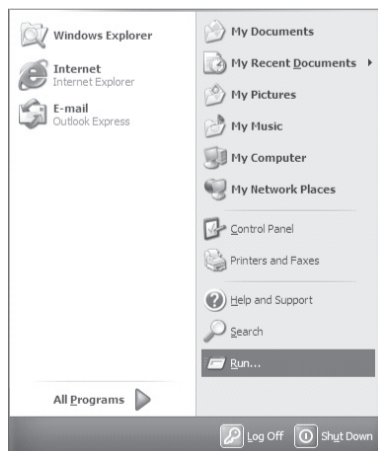
* No installation of the Maintenance Tool alone is required if you run the Network Configurator installer which also installs the Maintenance Tool.

The installation/uninstallation procedures for the Network Configurator are described in this section, and those for the Maintenance Tool are described in Section 3.

2.1. Installing the Network Configurator

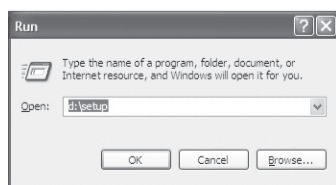
STEP1

Insert the Network Configurator installation CD into the CD-ROM drive of your computer. Select Run from the Windows Start Menu.



STEP2

Specify [setup] in the CD-ROM drive as the name of the program to execute and click the OK Button. In the following example, d equals the CD-ROM drive.



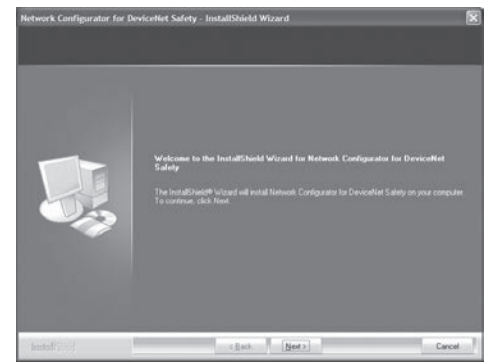
If your computer has an older version of Network Configurator (Ver 1.61 or earlier), the following message will appear. In this case is installed, first perform the uninstallation according to the instructions described in [2.2 Uninstalling the Network Configurator], and reinstall.



Then, in order to install the version-up module (WS02-CFSC1- J/E-UP), you have to have installed the older version of Network Configurator (Ver.2.*).

STEP3

The install program for the Network Configurator will start. Click the Next Button.



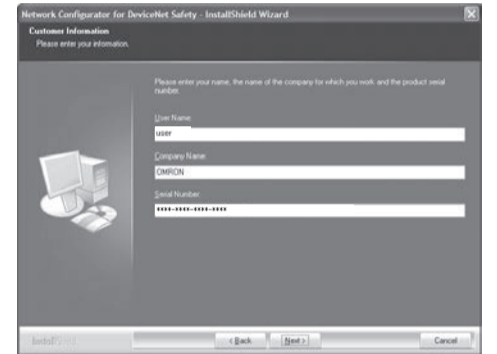
STEP4

The License Agreement will be displayed. Confirm the contents and, if you agree, click the Next Button.



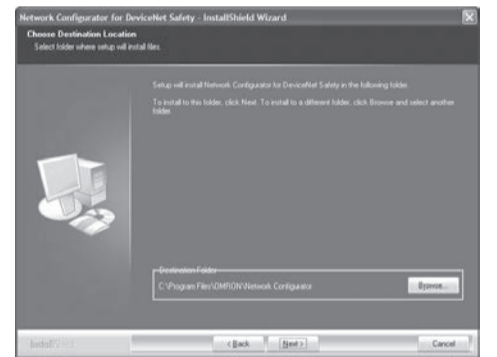
STEP5

Enter the User Name, Company Name, and Serial Number of the license and then click the Next Button. The serial number should be 19 characters, including the alphanumeric characters and the hyphen. It is printed on the License Certificate. The serial number is case-sensitive; please pay attention to case.



STEP6

Specify the folder in which to install the Network Configurator, and click the Next Button.



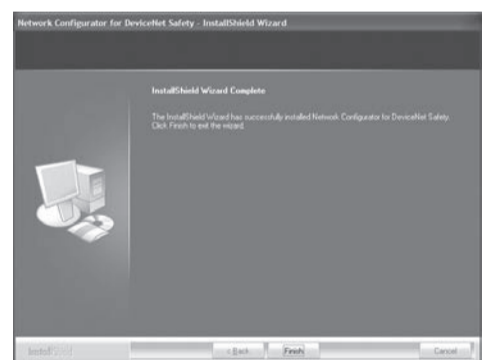
STEP7

If the entered information is correct, click the Install Button to start installation of the Network Configurator.



STEP8

Click the Finish Button to complete installation of the Network Configurator.



2.2. Uninstalling the Network Configurator

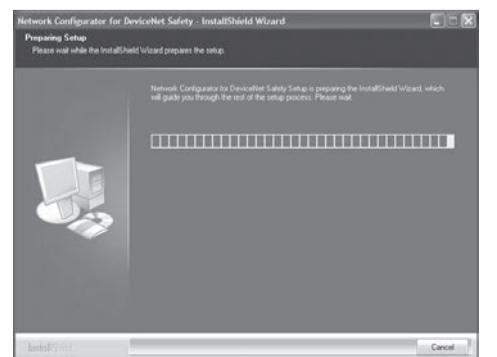
STEP1

Open the Control Panel and select Add or Remove Programs
* For Windows Vista, select Programs and Features.



STEP2

From the list of the installed programs, select Network Configurator for DeviceNet Safety and click the Change/Remove Button.

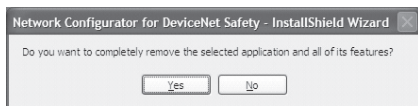


STEP3

The uninstall program for the Network Configurator will start.

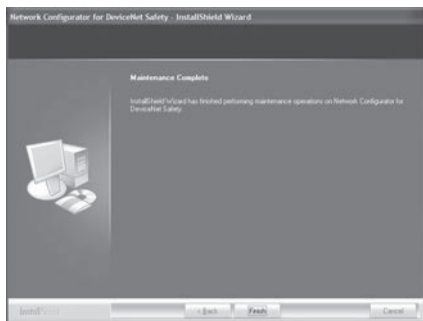
STEP4

A confirmation window will be displayed. Click the Yes Button to uninstall the Network Configurator.



STEP5

Click the Finish Button to complete uninstalling the Network Configurator.



3. Installation/Uninstallation of Maintenance Tool

3.1. Installing the Maintenance Tool Alone

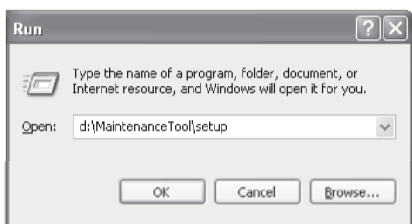
STEP1

Insert the Network Configurator installation CD into the CD-ROM drive of your computer. Select Run from the Windows Start Menu.

STEP2

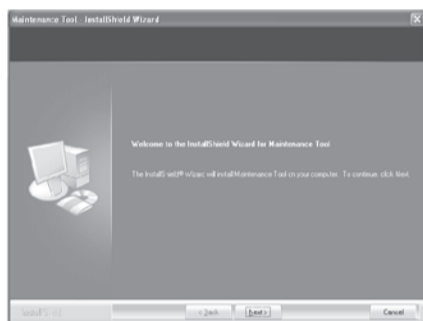
Specify [MaintenanceTool\setup] in the CD-ROM drive as the name of the program to execute and click the OK Button.

In the following example, d equals the CD-ROM drive.



STEP3

The installation program for the Maintenance Tool will start.



After launching the installation program, follow the steps for installing the Network Configurator (STEP 3 to STEP 8 in Section 2.1 Installing the Network Configurator) to complete the installation of the Maintenance Tool.

If your computer has an older version of Network Configurator, the following message will appear. In this case, first perform uninstallation according to the instructions described in [2.2 Uninstalling the Network Configurator], and reinstall.



3.2. Uninstalling the Maintenance Tool

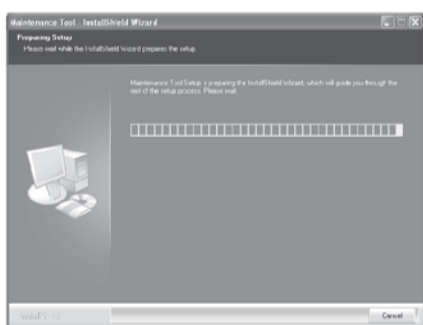
STEP1

Open the Control Panel and select Add or Remove Programs. * For Windows Vista, select Programs and Features.



STEP2

From the list of the installed programs, select Maintenance Tool and click the Change/Remove Button.



STEP3

The uninstallation program for the Maintenance Tool will start.

After launching the uninstallation program, follow the steps for uninstalling the Network Configurator (STEP 4 to STEP 5 in Section 2.2 Uninstalling the Network Configurator) to complete the uninstallation of the Maintenance Tool.

4. Installation/Uninstallation of Safety Network Controller USB Port Driver

4.1. Installing the Safety Network Controller USB Port Driver

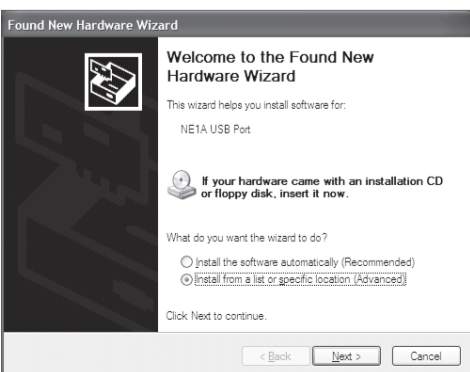
To connect the Network Configurator to DeviceNet via the USB port on the Safety Network Controller, the user must install the USB port driver on the user's computer.

STEP1

Turn ON the power supply to the Safety Network Controller and connect it to the computer by the USB cable.

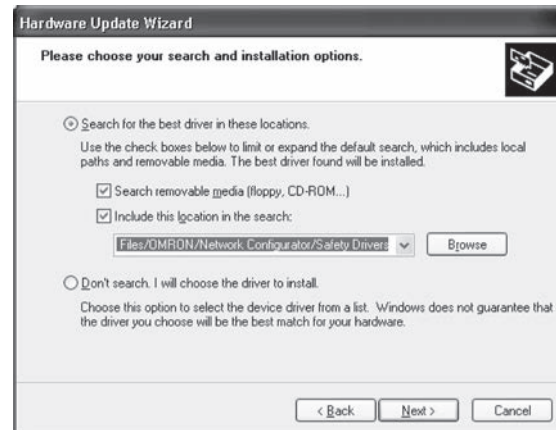
STEP2

New hardware will be found, and the Hardware Wizard will start. Select the Install from a list or specific location option and click the Next Button. Note: If USB cable is connected with NE0A series, following sentence is displayed. "NE0A USB Port"



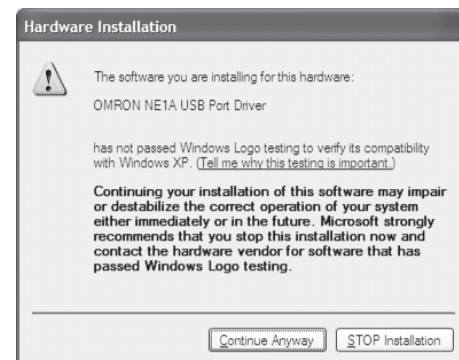
STEP3

Select the Search for the best driver in these locations option to install the driver and select the Include this location in the search check box. Specify (install folder) \Safety Drivers \USB\ folder on CD-ROM drive for the folder to search in the driver and click the Next Button. Note: Initial setting of install folder is: C:\Program Files\Network Configurator\



STEP4

A warning message may be displayed that indicates the driver has not passed Windows Logo testing. If such a warning message is displayed, ignore it and click the Continue Anyway Button to go on to the next step. Note: If USB cable is connected with NE0A series, the following sentence is displayed. "OMRON NE0A USB Port Driver"



STEP5

The driver will be installed. Note: If USB cable is connected with NE0A series, the following sentence is displayed. "OMRON NE0A USB Port Driver"

STEP6

Click the Finish Button to complete installation of the USB port driver. Note: If USB cable is connected with NE0A series, the following sentence is displayed. "OMRON NE0A USB Port Driver"



4.2. Uninstalling the Safety Network Controller USB Port Driver

STEP1

Open the Control Panel and select Add or Remove Programs. * For Windows Vista, select Programs and Features.



STEP2

From the list of the installed programs, select OMRON NE1A USB Port Driver and click the Change/Remove Button. Note: If USB cable is connected with NE0A series, the following sentence is displayed. "NE0A USB Port Driver"

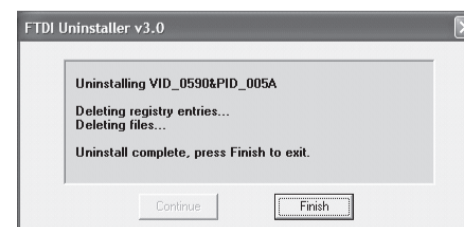
STEP3

The uninstall program for the USB port driver will start. Click the Continue Button.



STEP4

Deleting the driver will be completed in a short period of time. Click the Finish Button to complete uninstalling the USB port driver.



OMRON Industrial Automation Company

Regional Headquarters
OMRON EUROPE B.V.
Wegalaan 67-69-2132 JD Hoofddorp
THE Netherlands
Tel : (31)2356-81-300 / FAX : (31)2356-81-388

OMRON SCIENTIFIC TECHNOLOGIES INC.
6550 Dumbarton Circle, Fremont
CA 94555-3605 U.S.A.
Tel : (1)510-608-3400 / FAX : (1)510-744-1442

OMRON ASIAPACIFIC PTE.LTD.
No.438A Alexandra Road # 05-05/09 (Lobby 2),
Alexandra Technopark,
Singapore 119967
Tel : (65)6835-3011 / FAX : (65)6835-388

OMRON (CHINA) CO., LTD.
Room 2211, Bank of China Tower,
200 Yin Cheng Zhong Road,
PuDong New Area, Shanghai, 200120, China
Tel : (86)21-5037-2222 / FAX : (86)21-5037-2200

Note: Specifications subject to change without notice.
Printed in Japan